



GHG

Emission  
Mass  
Flow  
System

CO<sub>2</sub>

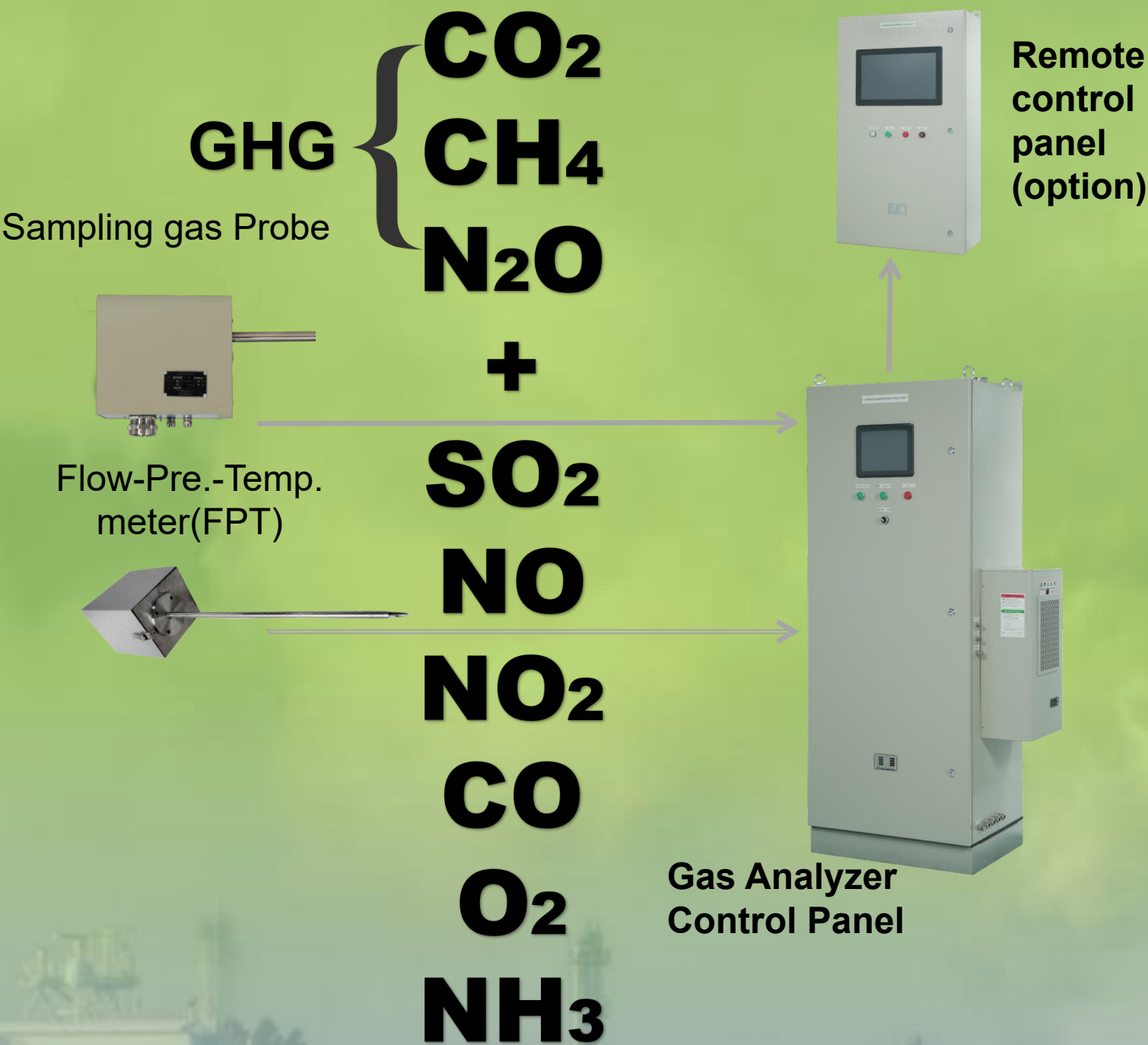
CH<sub>4</sub>

N<sub>2</sub>O

+ ...



To Meet EU MRV



**MARPOL Annex VI Regulation 13**  
Direct Measurement and Monitoring Methane Slip

**Mass Emissions Recording (Suitable for EU MRV)**  
Approved for monitoring  
all engine types engines (2-Stroke/4-Stroke  
marine diesels ), Boilers, Incinerators and  
Gas Combustion Units (GCU's)

MEPC.346(78)

IACS UR E10 Rev.8:2021

**Revised MARPOL 73/78 Annex VI Regulation 13**  
Nitrogen Oxides (NO<sub>x</sub>) and the NO<sub>x</sub> Technical Code  
2008, Chapter 6.4 -  
'Direct measurement and monitoring method (DMM)

**MEPC /Circ.471**  
Interim Guidelines for Voluntary Ship CO<sub>2</sub> Emission  
Indexing for Use In Trials  
Calculation of the CO<sub>2</sub> emission  
index from operational data

**MEPC.271(69)**  
Amendments to the NO<sub>x</sub> Technical Code,  
14 August 2017

**MEPC.1/Circ.895**  
UNIFIED INTERPRETATIONS TO THE NO<sub>x</sub> TECHNICAL CODE 2008,  
AS AMENDED, 9 July 2021

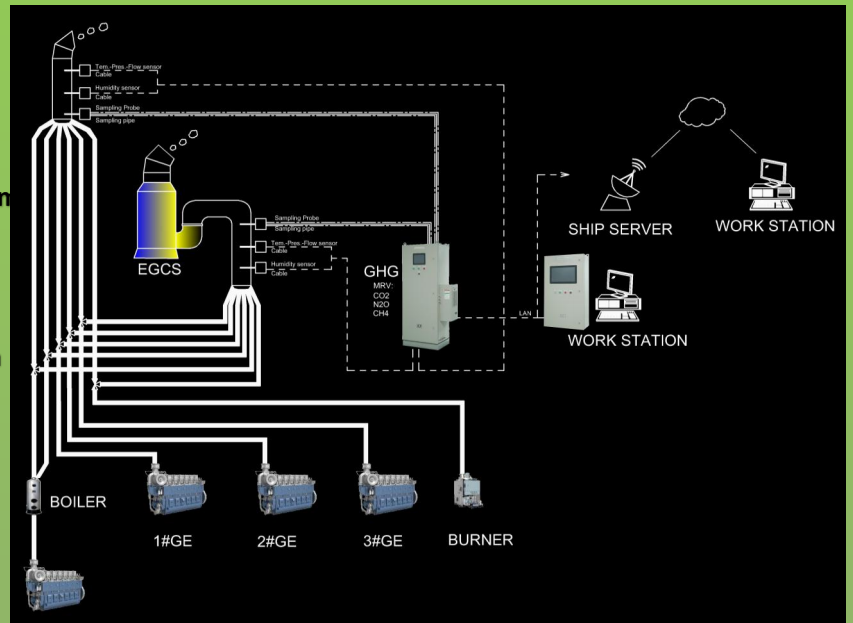
**Resolution MEPC.340(77)**  
2021 Guidelines for Exhaust Gas Cleaning Systems, adopted 26 November  
2021.

**RKMC-24GHG-HW**

# RKMC-24GHG-HW

RKMC fully integrates into the vessels automation system or scrubber panel

RKMC was designed to fully integrate into other shipboard systems using MODBUS. RKMC provides data to the vessels automation and alarm systems and can provide valuable data to vessel performance management software.



## Comprehensive data reporting software provides instantaneous, specific and mass emissions

RKMC features the most comprehensive data suite of all marine CEMS systems. Specific (MARPOL) emissions, instantaneous measurements, mass emissions and PM along with a host of other engine performance data provides the owner with a huge amount of data to ensure compliance whilst providing valuable metric to enable optimisation of vessel performance

## Methane / Amonia Slip

RKMC can monitor methane / amonia slip in real time in ppm, g/kWh and additionally report the total mass output of methane /amonia in kg/tons





# World Service Net



**RKMC CO., LTD. always try to supply the best product and service to customers with Considering customer's safety should be the first priority**



is the name changed from Riken Marine china Co., Ltd.  
This change is only related to the name of the company.  
All rights and obligations are undertaken by RKMCo.,Ltd.

## Factory and Products Type Approved By



Contact us : [info@RKMC-Asia.com](mailto:info@RKMC-Asia.com)